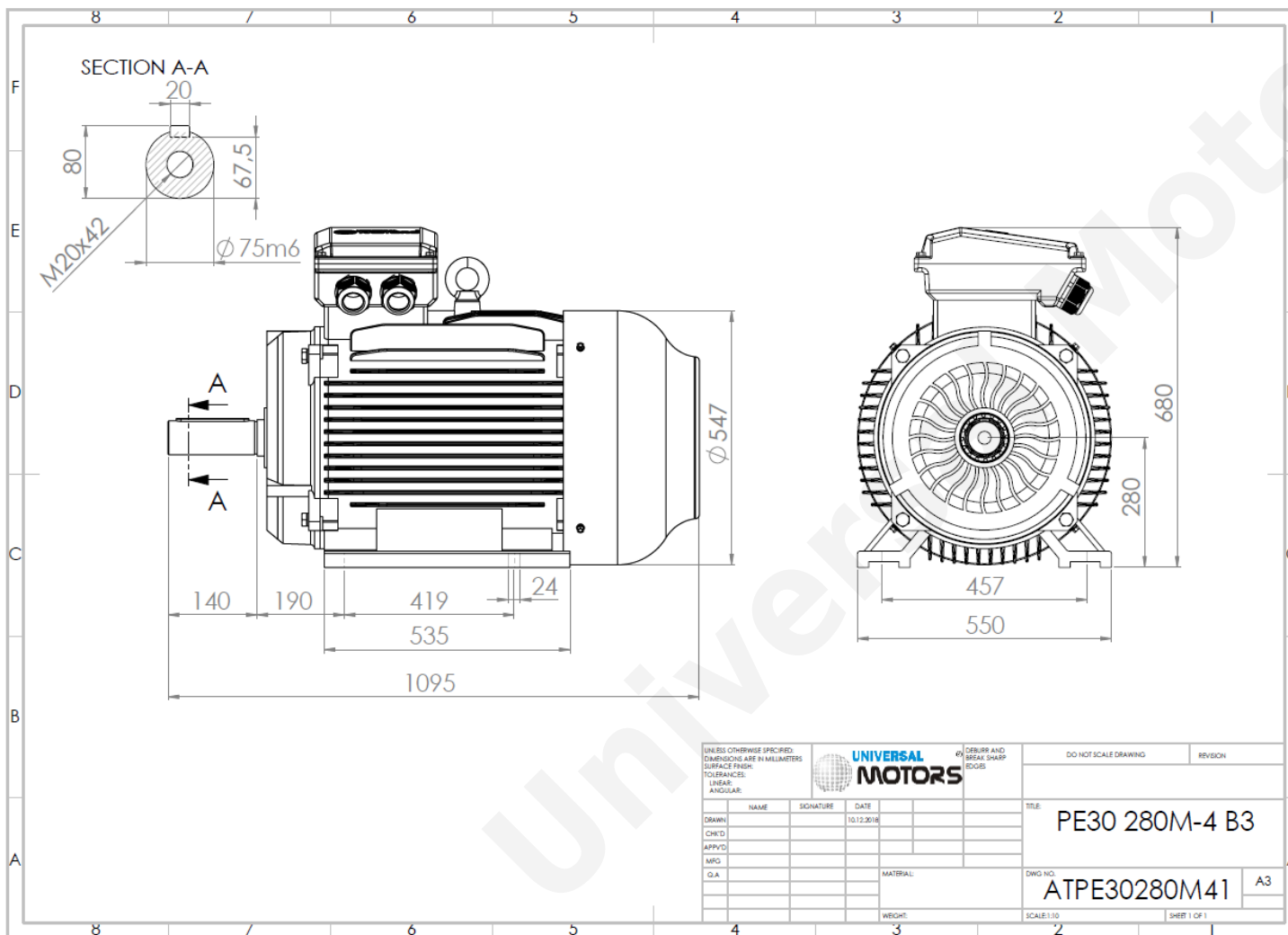




# TECHNICAL DATA

Three Phase Electric Motors - Cast Iron Frame  
 PE30 280 M 6 IE3  
 55 kW / 75 Cv  
 990 RPM



Motor type:	PE30 280 M 6 IE3
Output:	55 kW / 75 Cv
Speed (min <sup>-1</sup> ):	990 RPM
Frequency:	50 Hz
Voltage:	400 V
Current:	98.1 A
Power factor (Cos $\phi$ ):	0.86
Poles:	6
Insulation class:	F
Temperature rise Class:	B
Efficiency 50%:	93.2 %
Efficiency 75%:	94.2 %
Efficiency 100%:	94.1 %
Torque:	531 N.m
Tstarting/Tnominal:	2.0
Istarting/Inominal:	7.3
Tmaximum/Tnominal:	2.0
Noise:	67 Db(A)
Weight:	585 Kg
Bearing DE:	6317 C3
Bearing NDE:	6317 C3

Regime - S1

Altitude - 1000m

Environment Temperature - 40°C

## CONTACTS:

UNIVERSAL MOTORS Tel: +351 252 299 080  
 Rua de São Brás,745 Fax: +351 252 299 089  
 4480-782 VILA DO CONDE Mail: [geral@universalmotors.pt](mailto:geral@universalmotors.pt)

\* References applied only in the UK